

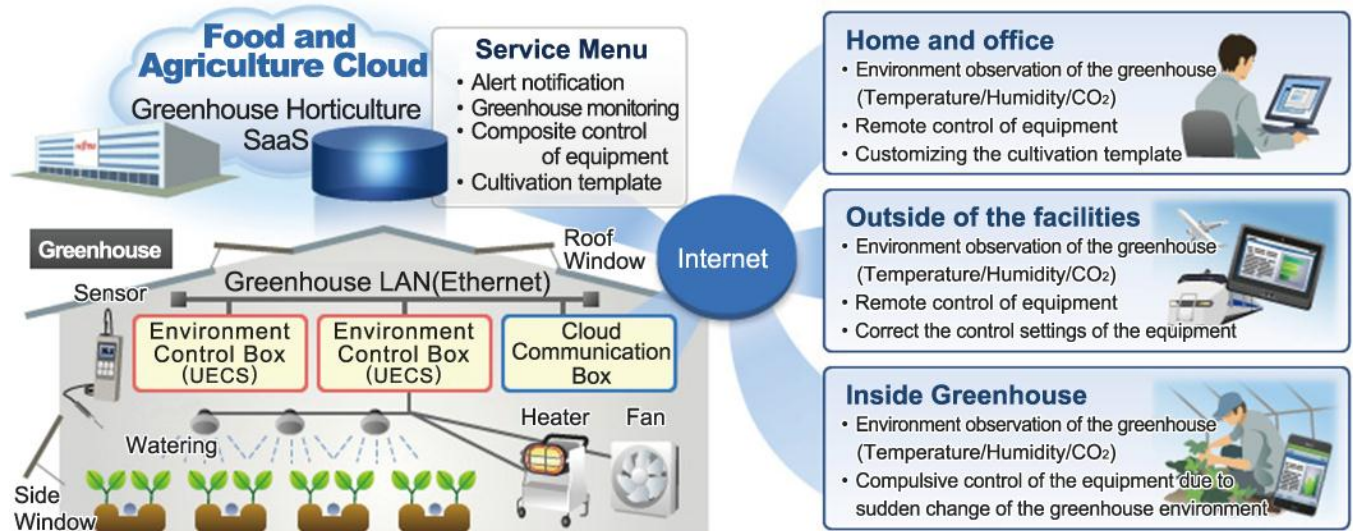
- Supporting high quality, stable supply and low cost in food and agricultural industries -

FUJITSU Intelligent Society Solution : Food and Agriculture Cloud Akisai
Greenhouse Horticulture SaaS, Environment Control Box

Service Overview

The service supports greenhouse horticulture, and is a part of Akisai Food and Agriculture Cloud products. "Environment Control Box(*1)" is a hardware that controls equipment and gathers data from sensors, "Greenhouse Horticulture SaaS" is cloud service that utilizes comprehensive data stored on the cloud platform. This service allows farmers to visualize the entire production process, observe greenhouses and control equipment remotely. Thus farmers are able to work timely and to supply high quality crops stably.

- Control horticultural facilities remotely.
- Set temperature of greenhouses at a preset degree automatically.
- Visualize environmental information of greenhouses, send alerts when abnormalities occur.
- Based on UECS(*2) standards which is an information base for horticulture / plants factory.



Advantage for customers

(*1) "Environment Control Box" : made by FUJITSU KYUSHU SYSTEMS LIMITED

(*2) UECS: stand for Ubiquitous Environment Control System. Greenhouse horticulture standards defined by UECS society

■ User friendly operation



- Operate by touch panels, such as smartphones or tablet PCs. (No need of mouse nor key board)
- Control equipment of greenhouses just like the way to control TV remotely.
- Recognize the environmental changes graphically on monitors.

■ Enable to observe greenhouses, control equipment and gather data remotely



- Observe and control greenhouses via internet by smartphones, tablet PCs and PCs.
- Monitor the condition of greenhouses in real time and send alerts when abnormal occurrence.
- Store environmental data on a cloud platform automatically, in order to analyze cultivation methods.

■ Extend or remove the controlling equipment in greenhouses on demand



- Support small to large facilities by only changing the number of nodes in greenhouses.
- Construct a facility at low cost. (Only one network cable required for data transmission.)
- Compatible with equipment of other manufacturer as long as they follow UECS communication standards.

Main Features

Controlling greenhouses

- Control by mobile devices
- Set conditions for equipment
- Force turn on / shutdown
- Inform equipment connectivity

Stored Data

- Environmental information (e.g. temperature)
- Operating information
- Operating logs
- Error logs

Monitoring greenhouses

- Results shown on mobile devices
- Real time monitoring
- Graphs of environmental information
- Alerts

Set conditions of equipment

- Register greenhouses to be managed
- Register equipment to be controlled
- Set conditions of automatic control
- Set conditions of alert

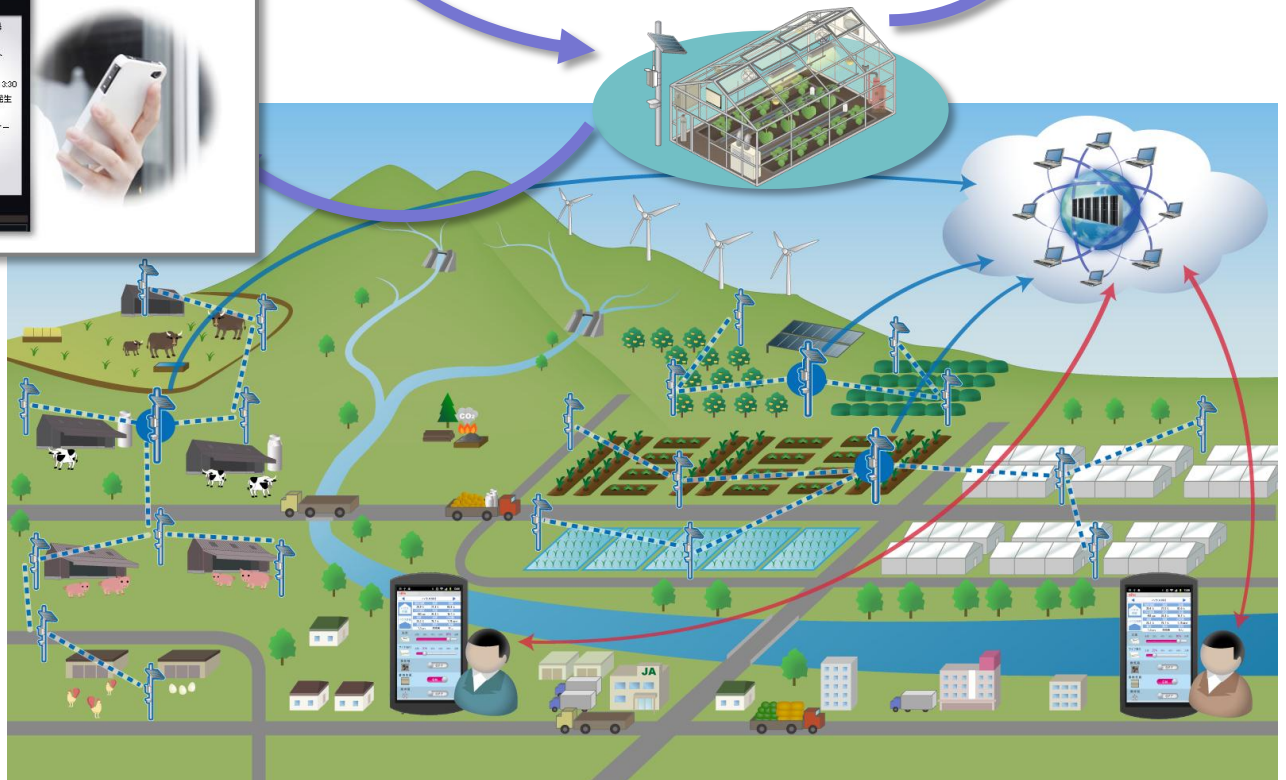
【Control greenhouses environment remotely】



【Gathering data / Monitoring】



【Alert message】



[Contact]

Global

FUJITSU KYUSHU SYSTEMS LIMITED, Tel: +81-92-852-3103, E-mail: uchino.tetsuya@jp.fujitsu.com

Korea

FUJITSU KOREA LIMITED, Tel: 02-3787-5537, E-mail: jhrhee@kr.fujitsu.com